



FRESNO COUNTY TRAUMA INFORMED NETWORK OF CARE

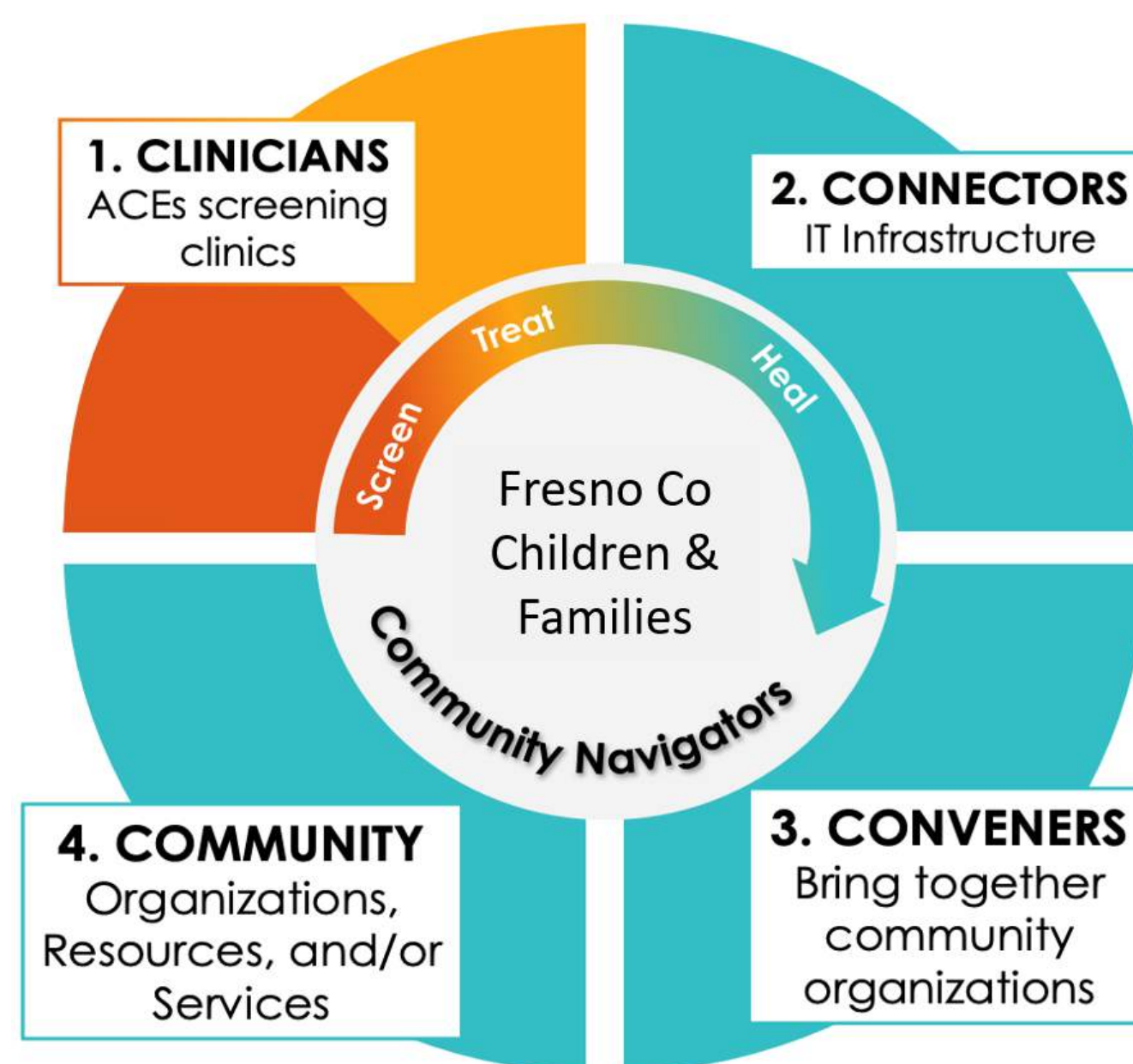




FRESNO COUNTY TRAUMA INFORMED NETWORK OF CARE

The Fresno County ACEs Aware Trauma Informed Network of Care cohort, led by the Fresno Community Health Improvement Partnership (FCHIP) and Saint Agnes Medical Center, is one of eight counties in California to be awarded an implementation grant from ACEs Aware Initiative, the Department of Health Care Services and the Office of the California Surgeon General. The 2.6M grant will be used to implement a seamless screening, referral, and response process to support families who are at risk of experiencing negative mental and physical health outcomes that stem from traumatic life events, also known as Adverse Childhood Experiences (ACEs) as seen in Figure 1.

FIGURE 1. Fresno County Children and Family Community Navigators



WHAT ARE ADVERSE CHILDHOOD EXPERIENCES (ACEs)?

The term ACEs comes from the landmark 1998 study by the Centers for Disease Control and Prevention and Kaiser Permanente. It describes 10 categories of adversities in three domains experienced by age 18 years. ACEs are associated with consequential health conditions such as asthma, diabetes, depression, heart disease and cancer, and these long-term changes are known as the toxic stress. The three domains are:

HOUSEHOLD CHALLENGES

Growing up in a household with incarceration, mental illness, substance dependence, absence due to parental separation or divorce, or intimate partner violence

ABUSE

Physical, emotional, and sexual abuse

NEGLECT

Physical and emotional neglect



TARGET POPULATIONS FACING HEALTH DISPARITIES

The prevalence of our health disparities in Fresno County is disproportionately burdened by our communities of color, especially within Southwest Fresno zip codes that experienced historical redlining. As of 2017, eighteen percent of all households in Fresno County have 4 or more ACEs and households with children are even higher at 21 percent.² While these are haunting statistics, the science demonstrates that these factors are all symptoms of community trauma and health inequity which can be prevented and treated through ACEs screening and access to “buffering” resources.³

ACES AWARE IMPLEMENTATION GRANT FUNDING

This critical funding will be used to develop a strong network of care where patients are able to access one of the key services beyond the doctor’s office. The key component will be the implementation of community health workers who will be the link between the patient, the doctor’s office, and community-based resources. Locally, over 20 community-based organizations will develop their capacity by receiving trauma-informed training and coaching to support over 100 Medical healthcare providers across 5 health systems who conduct ACEs screenings.

ABOUT FCHIP

FCHIP is an anchoring health focused initiative that works closely with the community, multi-sector partners, and local coalitions to collaborate, align, and leverage resources. FCHIP partners envision a culture of health in our community where every person has the opportunity and support they need to achieve a life of well-being. FCHIP’s network of partners are active in FCHIP’s four workgroups – the Trauma and Resilience Network, the Food Security Network, the Diabetes Collaborative, and the Land Use and Planning workgroup. For more information, please visit www.fchip.org.

ABOUT SAINT AGNES MEDICAL CENTER

Founded in 1929 by the Sisters of the Holy Cross, Saint Agnes Medical Center has built its healing legacy on caring for Central Valley residents with the highest level of safety, quality and compassion. Committed to meeting its community’s diverse and growing health care needs, the 436-bed acute care hospital also provides primary, specialty and urgent care through its growing network of more than 80 providers at 20 locations in Fresno and Clovis. Saint Agnes is a member of Trinity Health, one of the largest multi institutional Catholic healthcare delivery systems in the United States. For more information, please visit www.samc.com.

ACES AWARE IMPLEMENTATION GRANT LEAD ENTITIES



EXECUTIVE COMMITTEE

Ivonne Der Torosian, Saint Agnes Medical Center

Sue Kincaid, Fresno Community Health Improvement Partnership

Wilma Hashimoto, CASA of Fresno and Madera Counties

Dr. Amy Parks, UCSF Fresno

Artie Padilla, Central Valley Community Foundation

Dr. Amber Jacobo, Cradle to Career, Fresno County Superintendent of Schools

Tony Gonzalez, MPH, CalViva Health

2. "Prevalence of Adverse Childhood Experiences." Kids Data, 2011–2017, <https://www.kidsdata.org/topic/1969/aces-brfss/>. Accessed 21 Apr. 2021.

3. Adverse Childhood Experiences Data Report: Behavioral Risk Factor Surveillance System (BRFSS), California Department of Public Health, 2011–2017.

ACES AWARE INITIATIVE

This innovative public health approach forms the foundation of California's ambitious goal to reduce ACEs and toxic stress in California by half in one generation.

The health care setting offers a unique opportunity to help patients and families understand the impact of ACEs on health and to prevent and treat toxic stress. ACE screening involves assessing for the triad of adversity, clinical manifestations of toxic stress, and protective factors to assess clinical risk for toxic stress and to guide effective responses.

ACE SCREENING OVERVIEW

Medical Providers who attest to completing the ACEs Aware certified training can receive Medi-Cal payment for conducting ACE screenings. ACE screening involves assessing for adversity, clinical manifestations of toxic stress, and protective factors to guide a treatment plan which may include referrals to a Community Health Worker, a liaison ensuring there is a continuum of coordinated care.

BUFFERING SUPPORTS

The Trauma Informed Network of Care utilizes information technology platforms, Unite Us and Findhelp.org, so Community Health Workers can link patients to evidence-based "buffering" resources and supports that help to prevent, treat, and heal the harmful consequences of toxic stress. Evidence-based buffering supports that help regulate the stress response are included in Figure 2.

FIGURE 2. STRATEGIES TO REGULATE THE STRESS RESPONSE



To learn more about the ACEs Aware Initiative, visit the website at acesaware.org



TRAUMA AND RESILIENCE NETWORK

The FCHIP Trauma and Resilience Network (TRN) was established with the common desire to create trauma informed communities collectively building resilience in our youth, families, neighborhoods, and county.

The cross-collaboration of networks brings together multi-sector agencies such as higher education institutions, K-12 school districts, community-based organizations, and businesses with a united priority to develop a trauma-informed Network of Care in Fresno County. The work of TRN precedes the ACEs Aware grant but the joint efforts are only strengthened as an awardee.

TRAUMA INFORMED & RESILIENCE TRAININGS

1000
Trainings
Provided

Since 2019, the TRN Trainers have provided over 1000 trauma and resilience trainings to stakeholders, community members, mental health practitioners, and medical providers in Fresno County and aims to train many more.

The training will expand the community's health equity approach by making trauma and resiliency strategies the cornerstone of a strategic and collaborative effort.

CONNECT WITH US



To learn more about Trauma and Resilience Network, contact Artie Padilla, Trauma and Resilience Network Co-Chair, at artie@centralvalleycf.org



FCHIP

Collective Efforts. Real Outcomes.

NETWORK OF CARE

GOALS AND SHARED OUTCOMES

GOAL 1

Create a
**Sustainable
Network of Care**

GOAL 2

Generate a
**Trauma Informed
Community**
by training 2000 people
by 2025

GOAL 3

Grow the
**Network of Care
Partners**

PARTNERS

Community-Based Organizations

Breaking the Chains
California Health Collaborative
CASA of Fresno and Madera Counties
Centro Binacional para el Desarrollo Indígena Oaxaqueño (CBDIO)
Centro La Familia
City Without Orphans
Comprehensive Youth Services
Economic Opportunities Commission LGBTQ+ Resource Center
Exceptional Parents Unlimited
Every Neighborhood Partnership
Fresno Interdenominational Refugee Ministries (FIRM)
First 5 Fresno County
Fresno Chaffee Zoo
Fresno County Black Infant Health
Fresno Metro Ministry
Hope Now For Youth
KC Kids
Made for Them
Marjaree Mason Center
NAMI Fresno
San Joaquin River Parkway and Conservation Trust
The Resiliency Center
United Way Fresno and Madera Counties
West Fresno Family Resource Center
Westside Family Preservation Services Network, Huron

Medical Providers

Adventist Health
Camerana Health
Clinica Sierra Vista
KC Kids
Saint Agnes Medical Center
UCSF Fresno
Valley Children's Healthcare

Information Technology Team

Cradle to Career
FindHelp powered by Aunt Bertha
Fresno County Superintendent of Schools
Saint Agnes Medical Center
Unite Us

Trauma Informed Trainers

Anago Consulting
Brainwise Solutions
Clear Thinking Solutions, Inc.
Cultural Brokers, Inc.
Dr. B ~ Leave A Lifeprint
KC Kids
Made for Them

Community Health Workers

KC Kids
Saint Agnes Medical Center
UCSF Fresno

Fiscal Agent

Saint Agnes Medical Center

Project Management

Fresno Community Health Improvement Partnership (FCHIP)

GIVE TO FCHIP

When you contribute to FCHIP, you are making an investment towards improving the health of the community. Join our movement and together we can combine our efforts and resources to create a healthier Fresno County!

INVESTING IN FCHIP

We offer a variety of ways to contribute to FCHIP. To make a difference with a financial investment, the following options can have the biggest impact.

Contribution opportunities:

- Area of most need to support FCHIP’s collaborative work
- Shared data work
- Communications
- Community engagement work

Sponsorship opportunities:

- FCHIP Quarterly Lunch Convening
- Annual State of Our Health Breakfast

COLLECTIVE ACTION



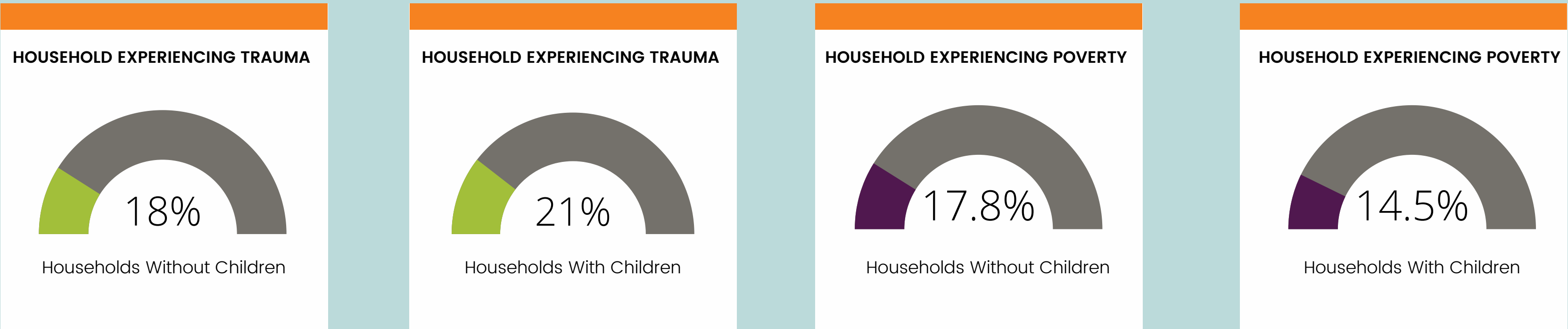
Dr. Nadine Burke Harris
Surgeon General of California

“

The single most important thing we need today is the courage to look this problem in the face and say, 'This is real. This is all of us'.

”

FRESNO COUNTY NEEDS



4. Kids Data, Prevalence of Adverse Childhood Experiences, 2011–2017
5. Health Fresno County Data, 2021

The cost of ACEs in California to be \$112.5 billion, including \$10.5 billion in personal health care spending and, \$102 billion in years of productive life lost due to early death and disability.

By working upstream and addressing toxic stress and social determinants of health through effective care coordination, we can begin to close the gap in health inequities and build a more resilient community.

To invest in FCHIP, contact Sue Kincaid, FCHIP Program Director, at sue@fresnometmin.org.



Designed by: Ashlee Hernandez, M.S.
Project Manager, Fresno Community Health Improvement Partnership
Belinda Diaz
Project Administrator, Fresno Community Health Improvement Partnership